

## Sutinee Potisuwan

**Subject:** FW: Summer / Winter School Programme - Engineering and Natural Heritage of Sri Lanka

Begin forwarded message:

**From:** "K.C.C. Perera" <kcper@ou.ac.lk>

**Subject:** Summer / Winter School Programme - Engineering and Natural Heritage of Sri Lanka

**Date:** 26 September 2567 at 4:33:51 pm GMT+7

**To:** [ksucla2017@gmail.com](mailto:ksucla2017@gmail.com)

คุณไม่ได้รับอีเมลจาก [kcper@ou.ac.lk](mailto:kcper@ou.ac.lk) บ่อยนัก เรียนรู้สาเหตุใดจึงมีความสำคัญ

Greetings from the Open University of Sri Lanka!

Summer / Winter School Programme - Engineering and Natural Heritage of Sri Lanka is offered by the Centre for Environmental Studies and Sustainable Development of the Open University of Sri Lanka (OUSL). The program is an expert-guided journey through the best island of its size. Currently, the applications can be submitted and will be closed on **15th October 2024**.

For more information about the programme please visit our website at <https://ou.ac.lk/cessd/summerwinter-school-programme/> and you may also contact Prof. Bandunee Athapathhu / Director at **+94 777577321 for more information**.

We would be very thankful if you could kindly give publicity to this programme with your network. An e-flyer is enclosed herewith.

We are looking forward to hearing from you,



เรียน อธิการบดี

ด้วย The Open University of Sri Lanka โดย Centre for Environmental Studies and Sustainable Development ประเทศศรีลังกา ประชาสัมพันธ์ Summer/Winter School Program - Engineering and Natural Heritage of Sri Lanka โดยประกอบด้วย การอบรมเชิงปฏิบัติการ การศึกษาศิลปวัฒนธรรม และการออกพื้นที่ไปยังแหล่งสำคัญทางประวัติศาสตร์ซึ่งเป็น Cultural Heritage ณ เมือง Colombo, Dambulla, Sigiriya, Anuradhapura, Ritigala, Polonnaruwa, Knuckles, Kandy โดยสามารถเลือกช่วงระยะเวลา การเข้าร่วมได้ คือ ระหว่างวันที่ 25 พฤศจิกายนถึง 4 ธันวาคม 2567 หรือวันที่ 2-11 ธันวาคม 2567 ครอบคลุมระยะเวลา 10 วัน

ทั้งนี้ การเข้าร่วมโครงการข้างต้น มีค่าใช้จ่ายเป็นจำนวนเงิน 1,800 ดอลลาร์สหรัฐ (USD) (ไม่รวมค่าบัตรโดยสารเครื่องบินระหว่างประเทศ) ซึ่งผู้สมัครเข้าร่วมโครงการต้องรับผิดชอบค่าใช้จ่ายทั้งหมด โดยผู้สนใจสมัครเข้าร่วมโครงการข้างต้นสามารถศึกษาข้อมูลเพิ่มเติมได้จากเอกสารแนบมาพร้อมนี้ และสมัครได้ที่ QR Code ดังโปสเตอร์ที่แนบมานี้ ภายในวันที่ 15 ตุลาคม 2567

จึงเรียนมาเพื่อโปรดพิจารณา เห็นควรเวียนแจ้งคณะ/วิทยาลัย เพื่อประชาสัมพันธ์ผ่านระบบ e-doc เว็บไซต์และเพจกองพัฒนาภาษาและกิจการต่างประเทศและเพจ NU International Scholarships ต่อไป

สรณ  
30ก.ย.67

ลงชื่อ .....

(นายจักรกฤษณ์ เฟื่องปรารงค์)

ผู้อำนวยการกองพัฒนาภาษาและกิจการต่างประเทศ

วันที่ 30ก.ย.67



- (  ) ดำเนินการตามเสนอ  
( ) อื่น ๆ .....

ลงชื่อ .....

จรัสดาว คงเมือง

(ดร.จรัสดาว คงเมือง)

รองอธิการบดีฝ่ายพัฒนานิสิต ศิษย์เก่า และศิลปวัฒนธรรม

ปฏิบัติราชการแทน อธิการบดีมหาวิทยาลัยนเรศวร

วันที่ 1 ต.ค. 67

**暑期/冬季学校课程**  
**ENGINEERING AND NATURAL HERITAGE OF SRI LANKA**  
**斯里兰卡的工程和自然遗产**  
**SUMMER/WINTER SCHOOL PROGRAMME**  
“最佳岛屿”的专家导游之旅  
An expert-guided journey through "The best island of the world"

**你得到了什么?**  
What you gain?

**COURSE FEE**  
**USD 1800\***

跨工程与自然融合的新学科知识  
Interdisciplinary insights into applying engineering with nature

了解各种工程成就和挑战  
Exposure to diverse engineering achievements and challenges

了解前沿趋势和知识  
A glimpse of progressive engineering trends and practices

实践探索性活动的能力，激发创造力和创新  
Build a skill set on experiential activities that foster creativity and innovation

生物多样性和地区令人惊叹的风景的亲身体验  
The striking diversity of biodiversity landscapes in a biodiversity hotspot

**课程亮点**  
Course highlights

- 专家指导会议  
Expert guided sessions
- 现场研讨会  
On-site workshops
- 文化体验  
Cultural experience
- 野外课程  
Field excursions

**谁可以加入?**  
Who can join?

本课程只限斯里兰卡以外的科技领域的学生参加  
Foreign Undergrad students/students of any others who are interested in traditional knowledge blended with modern technologies of Sri Lanka's natural and engineering heritage, biodiversity, cultural and traditional knowledge of Sri Lanka

注：本课程以英语授课。  
课程费用不包括机票费用。  
Note: This programme is conducted in English medium.  
The course fee will not cover the cost of the airfare.

Contact  
☎ 011 288 1 423  
✉ [ceesd@ou.ac.lk](mailto:ceesd@ou.ac.lk)  
🌐 [ou.ac.lk/ceesd/](http://ou.ac.lk/ceesd/)

Website: <https://ou.ac.lk/ceesd/summer/winter-school-programme/>

Best Regards,

Chandi Perera  
Assistant Director  
International Relations Unit  
The Open University of Sri Lanka  
P.O. Box 21, Nawala  
Nugegoda, 10250  
Sri Lanka

Tel : +94 11 2881000 , Ext: 1145  
Direct: +94 11 2854111  
Email: [ird@ou.ac.lk](mailto:ird@ou.ac.lk)



CONFIDENTIAL COMMUNICATION

E-mails from The Open University of Sri Lanka normally contain confidential and privileged material and are for the sole use of the intended recipient. Use or distribution by an unintended recipient is prohibited and may be a violation of the law. If you believe that you received this e-mail in error, please do not read this e-mail or any attached items. Please delete the e-mail and all attachments, including any copies thereof, and inform the sender that you have deleted the e-mail, all attachments, and any copies thereof. Thank you.



CONFIDENTIAL COMMUNICATION

E-mails from The Open University of Sri Lanka normally contain confidential and privileged material and are for the sole use of the intended recipient. Use or distribution by an unintended recipient is prohibited and may be a violation of the law. If you believe that you received this e-mail in error, please do not read this e-mail or any attached items. Please delete the e-mail and all attachments, including any copies thereof, and inform the sender that you have deleted the e-mail, all attachments, and any copies thereof. Thank you.



# 暑期/冬季学校课程 ENGINEERING AND NATURAL HERITAGE OF SRI LANKA

## 斯里兰卡的工程和自然遗产 SUMMER/WINTER SCHOOL PROGRAMME

“最佳岛屿”的专家导游之旅  
*An expert-guided journey through  
‘the best island of its size’*

**COURSE FEE  
USD 1800\***

### 你得到了什么? What you gain?

将工程与自然融合的跨学科见解  
*Interdisciplinary insights into melding  
engineering with nature.*

接触各种工程成就和挑战  
*Exposure to diverse engineering achievements  
and challenges.*

工程发展趋势和实践一瞥  
*A glimpse of evolutionary engineering  
trends and practices.*

实践探索性远足的技能，激发创造力和创新。  
*Hands on skills on explorative excursions  
that inspire creativity and innovation.*

生物多样性热点地区令人惊叹的景观的终身记忆。  
*The lifelong memory of breathtaking landscapes in  
a biodiversity hotspot.*

### 课程亮点 Course highlights

专家指导会议  
*Expert guided sessions*

现场研讨会  
*On site workshops*

文化体验  
*Cultural experience*

野外漂移  
*Field excursions*

### 谁可以加入? Who can join?

对探索传统知识与现代科技相结合的奇迹感兴趣的外国学生  
*Foreign undergraduates, students or any others who are  
interested in traditional know-how blended with modern technology*

对斯里兰卡的自然和工程遗产、生物多样性、文化和传统知识感兴趣的各方  
*Parties interested in natural and engineering heritage, biodiversity  
cultural and traditional knowledge of Sri Lanka.*

注：本课程以英语授课。  
课程费用不包括机票费用  
*Note: This programme is conducted in English medium.  
The course fee will not cover the cost of the airfare.*



Contact:  
☎ 011 288 1 423  
✉ [cessd@ou.ac.lk](mailto:cessd@ou.ac.lk)  
🌐 [ou.ac.lk/cessd/](http://ou.ac.lk/cessd/)

Website: <https://ou.ac.lk/cessd/summerwinter-school-programme/>



# 暑期/冬季学校课程 ENGINEERING AND NATURAL HERITAGE OF SRI LANKA



## 斯里兰卡的工程和自然遗产 SUMMER/WINTER SCHOOL PROGRAMME

“最佳岛屿”的专家导游之旅

An expert-guided journey through  
‘the best island of its size’

COURSE FEE

USD1800\*

### 你得到了什么? What you gain?

将工程与自然融合的跨学科见解。  
Interdisciplinary insights into melding  
engineering with nature.

接触各种工程成就和挑战。  
Exposure to diverse engineering achievements  
and challenges.

工程发展趋势和实践一瞥。  
A glimpse of evolutionary engineering  
trends and practices.

实践探索性远足的技能，激发创造力和创新。  
Hands on skills on explorative excursions  
that inspire creativity and innovation.

生物多样性热点地区令人惊叹的景观的终身记忆。  
The lifelong memory of breathtaking landscapes in  
a biodiversity hotspot.

### 课程亮点 Course highlights

专家指导会议  
Expert guided sessions

现场研讨会  
On site workshops

文化体验  
Cultural experience

野外漂移  
Field excursions

### 谁可以加入? Who can join?

对探索传统知识与现代科技相结合的奇迹感兴趣的外国学生  
Foreign undergraduates, students or any others who are  
interested in traditional know-how blended with modern technology

对斯里兰卡的自然和工程遗产、生物多样性、文化和  
传统知识感兴趣的各方

Parties interested in natural and engineering heritage, biodiversity,  
cultural and traditional knowledge of Sri Lanka.

注：本课程以英语授课。  
课程费用不包括机票费用

Note: This programme is conducted in English medium.  
The course fee will not cover the cost of the airfare.



Contact

☎ 011 288 1 423

✉ [cessd@ou.ac.lk](mailto:cessd@ou.ac.lk)

🌐 [ou.ac.lk/cessd/](http://ou.ac.lk/cessd/)

Website: <https://ou.ac.lk/cessd/summerwinter-school-programme/>



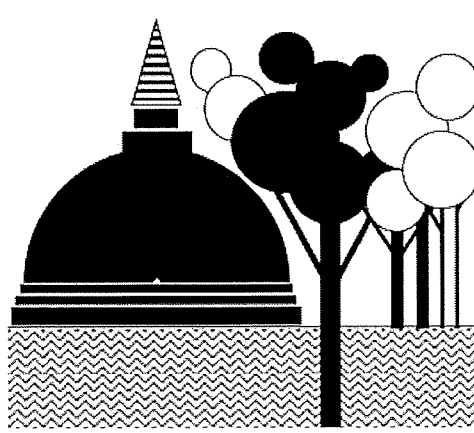
ශ්‍රී ලංකා විවෘත විශ්වවිද්‍යාලය  
இலங்கை திறந்த பல்கலைக்கழகம்  
The Open University of Sri Lanka



[Home](#) [Course Details](#) [Course Modules](#) [Visit Schedule](#)

(<https://www.facebook.com/p-Centre-for-Environmental-Sustainable-Development-CCESSD/1000835370137-mibextid=LQQJ4d>)

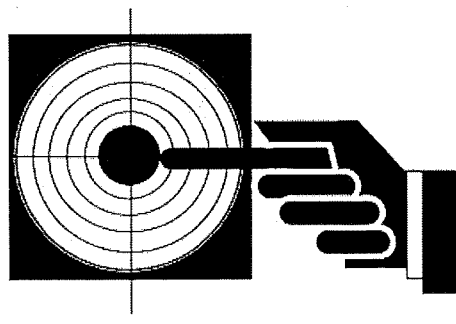
## Course Overview



This programme, extended to 10 days, is designed:

- To explore the salient features of Sri Lanka's engineering heritage, with a special focus on its sustainability platform.
- To expose to the rich and diverse bio-diversity of Sri Lanka, with the distributed patterns in the climatic and topographic zones.
- To acknowledge the current trends in the localized indigenous knowledge assimilation initiatives on environmental sustainability and resource management strategies.
- To highlight the importance of Sri Lanka in early knowledge transfer networks, with its strategic location in the contemporary maritime routes.

## Project Objectives

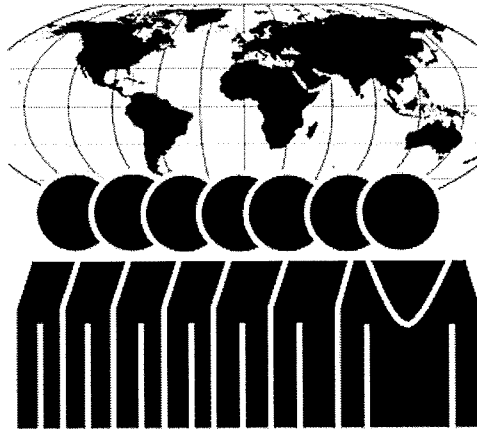


Once you complete this programme, you should be able to achieve the following knowledge and skills.

- Interdisciplinary insights into melding engineering with nature
- Exposure to diverse engineering achievements and challenges

- A glimpse of evolutionary trends in engineering principles and practices
- Hands-on skills on explorative excursions that inspire creativity and innovation.
- The lifelong memory of a breathtaking landscapes in a biodiversity hotspot

## Participants and Medium of Instruction



### Participants

This programme aims for:

- Foreign undergraduates, students or any others who are interested in heritage studies.
- Parties interested in exploring the cultural and natural richness of Sri Lanka.

### Medium of Instructions

The programme is conducted and all the study material are available in English medium. Therefore, a fair knowledge in English language is preferred.

## CESSD

Centre for Environmental Studies & Sustainable Development

The Open University of Sri Lanka



THE  
**OPEN UNIVERSITY**  
OF SRI LANKA

### Consultancy Services

The CESSD offers consultancy services in the areas of

- Domestic/Industrial wastewater treatment
- Waste and Energy Management

## CONTACTS US

Prof. Bandunee C. L. Athapattu

Director

+94 112 881111

dircessd@ou.ac.lk

CESSD Staff

+94 112881423

cessd@ou.ac.lk



# Engineering and Natural Heritage of Sri Lanka: Summer/Winter School Programme

This programme is designed to explore the rich engineering and natural heritage of Sri Lanka. If you wish to join, please fill out this Google form.

**Duration:** 10 days

**Fees:** 1800 USD

**Travel Destinations:** Colombo, Dambulla, Sigiriya, Anuradhapura, Ritigala, Polonnaruwa, Knuckles, Kandy

**The programme schedule and other details can be found on our official website.**

<https://cessd.ou.ac.lk/summerwinter-school-programme/>

***For further information:***

**Tel:** 0112881423

**Email:** cessd@ou.ac.lk'

sutineep@nu.ac.th [Switch account](#)



\* Indicates required question

Email \*

Your email



Request edit access



# ENGINEERING AND NATURAL HERITAGE OF SRI LANKA

## SUMMER/WINTER SCHOOL PROGRAMME



An expert-guided journey through  
*'the best island of its size'*



### What you gain?

- Interdisciplinary insights into melding engineering with nature.
- Exposure to diverse engineering achievements and challenges.
- A glimpse of evolutionary engineering trends and practices.
- Hands on skills on explorative excursions that inspire creativity and innovation.
- The lifelong memory of breathtaking landscapes in a biodiversity hotspot.

### Who can join?

- Foreign undergraduates, students or any others who are interested in heritage studies.
- Parties interested in exploring the cultural and natural richness of Sri Lanka.

### Course highlights

- Expert guided sessions
- On site workshops
- Cultural experience
- Field excursions

#### Contact

☎ 011 288 1 423

✉ [cessd@ou.ac.lk](mailto:cessd@ou.ac.lk)

🌐 [ou.ac.lk/cessd/](http://ou.ac.lk/cessd/)

COURSE FEE  
**USD 1800**  
WITHOUT AIRFARE



Note: This programme is conducted in English medium.

Request edit access

**Would you like to participate in the Summer/Winter School Programme? \***

Yes

No

**Name \***

Your answer

**Age \***

Your answer

**Gender \***

Male

Female

Prefer not to say

Other

**Country \***

Your answer

**Contact Number (WhatsApp)**

Your answer



Request edit access



**Are you employed? \***

Yes

No

**Which batch are you willing to participate in? \***

September: 16th to 25th

November: 25th to 4th

December: 2nd to 11th

**If you wish to join your friends, partner, family, or others, how many participants will join the programme, excluding you? (Specify the number.)**

Your answer

**Are there any requirements or suggestions for the programme outside of the scheduled activities?**

Your answer


Submit

Clear form

Never submit passwords through Google Forms.

This form was created inside of The Open University of Sri Lanka (OUSL). [Report Abuse](#)

Google Forms

 Request edit access



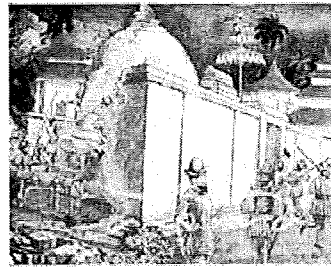
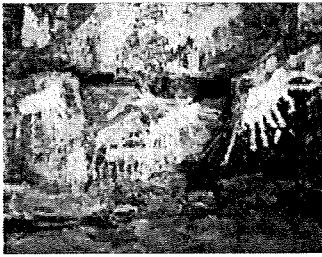


ශ්‍රී ලංකා විවෘත විශ්වවිද්‍යාලය  
இலங்கை திறந்த பல்கலைக்கழகம்  
The Open University of Sri Lanka



[Home](#) [Course Details](#) [Course Modules](#) [Visit Schedule](#)

(<https://www.facebook.com/p/Centre-for-Environmental-Studies-and-Sustainable-Development-CESSD/1000835370137>)  
CESSD/1000835370137  
mibextid=LQQJ4d

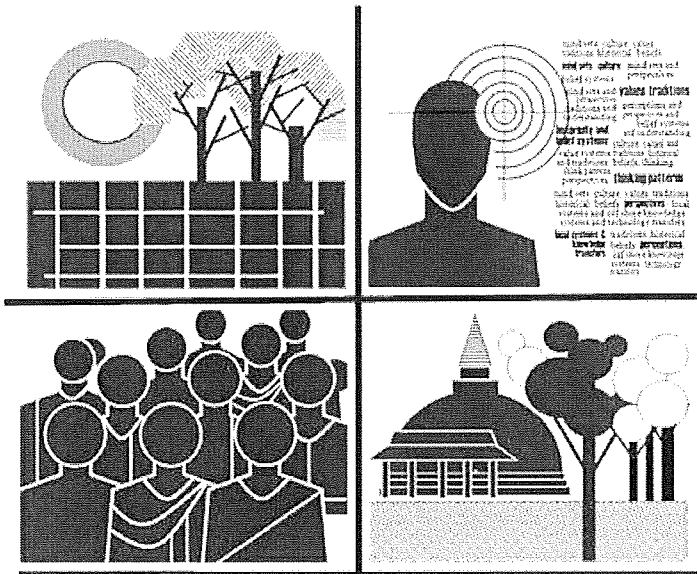


## Module 1: Historical & Natural Settings

- Introduction
- Natural settings
- Location
- Topographic & climatic zones
- Historical settings
- Pre-historic to late-historic periods
- Colonial occupation
- Post-colonial period

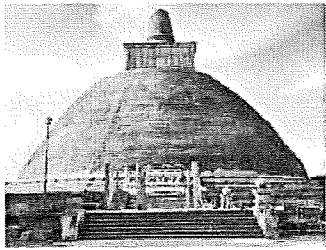
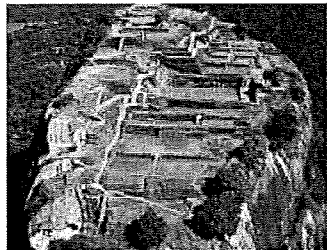
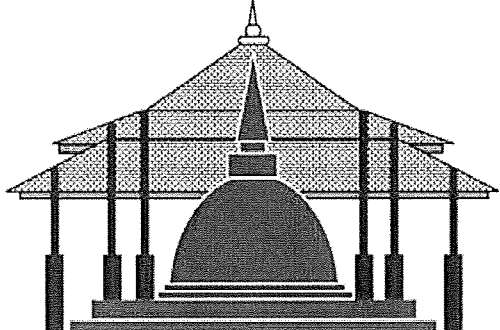
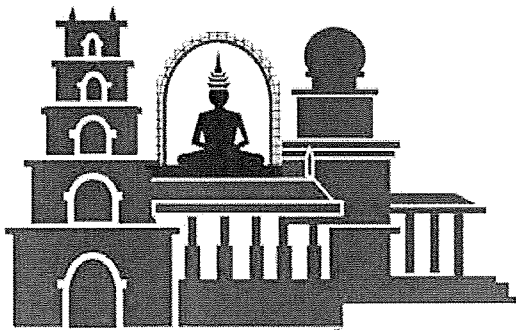


Ar  
Sc



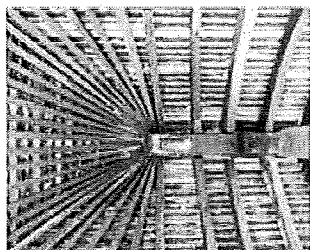
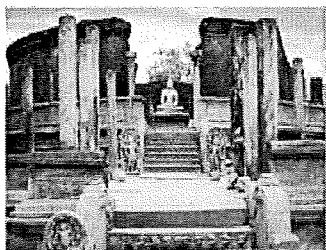
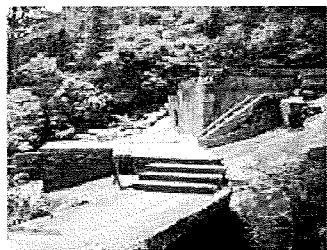
## Module 2: Engineering Heritage in general

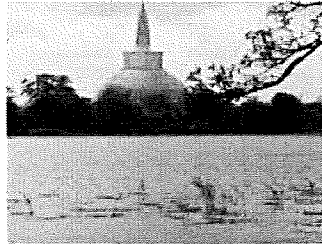
- Introduction
- Natural conditions
- Demographic conditions
- Socio – cultural transformations
- Necessity of Engineering products
- Nature – Human – Engineering matrix



## Module 3: Construction and Structures

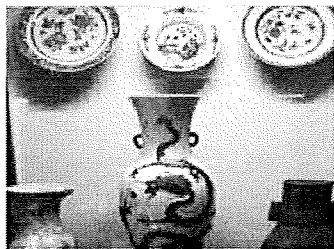
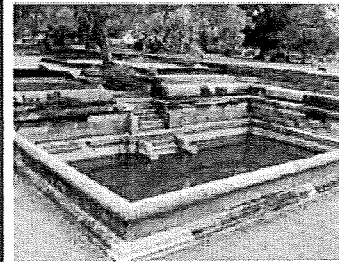
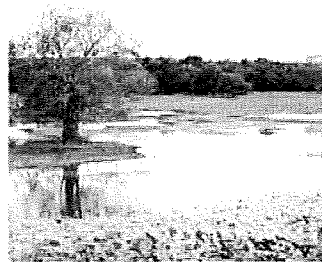
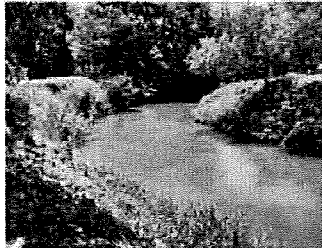
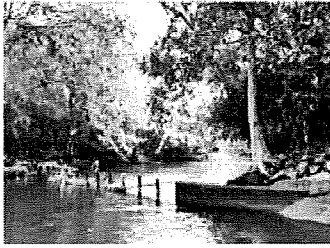
- Introduction
- Stūpa structures
- Walled structures
- Column & Beam structures
- Dome structures
- Natural caves and modifications
- Building Thermal Comfort
- Sustainable framework of the constructions & structures





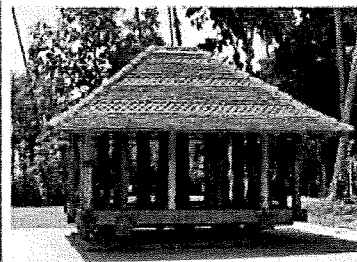
## Module 4: Water Utilization

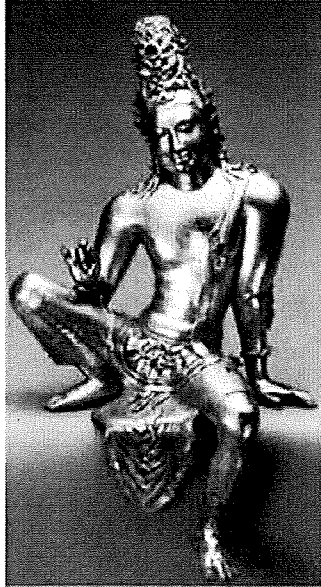
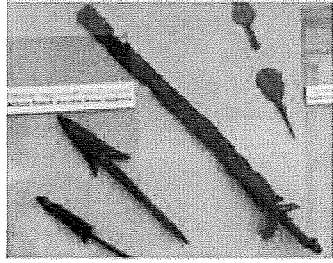
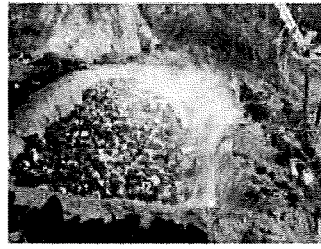
- Introduction
- Water storages
- Water diversion sites
- Inter-basin water diversions and canal systems
- Village tanks cascades
- Water & urban settings
- Sustainable framework of the constructions & structures



## Module 5: Transport & Mobility

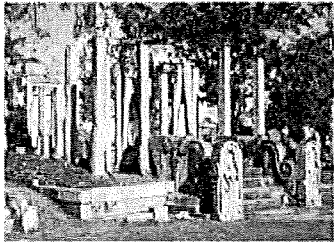
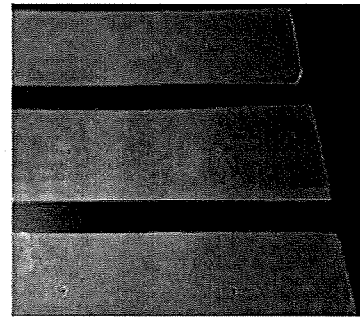
- Introduction
- Maritime transport
- Ports, artifacts & currency
- Traditional sea crafts
- Inland water transport
- Traditional crafts for inland water transport
- Inland land transport
- Road networks & bridges
- Resting places and facilities





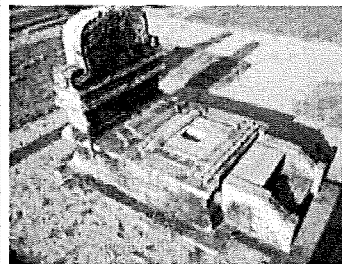
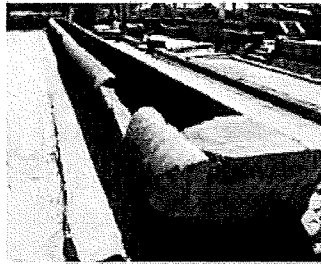
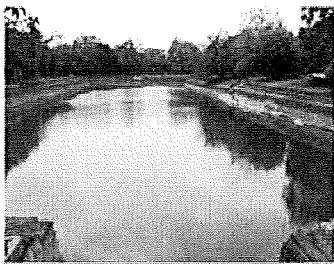
## Module 6: Metals & Processing

- Introduction
- Iron extraction & processing
- Steel manufacturing
- Steel implements
- Copper extraction & processing
- Other metals (gold, etc.) extraction & processing
- Products and markets

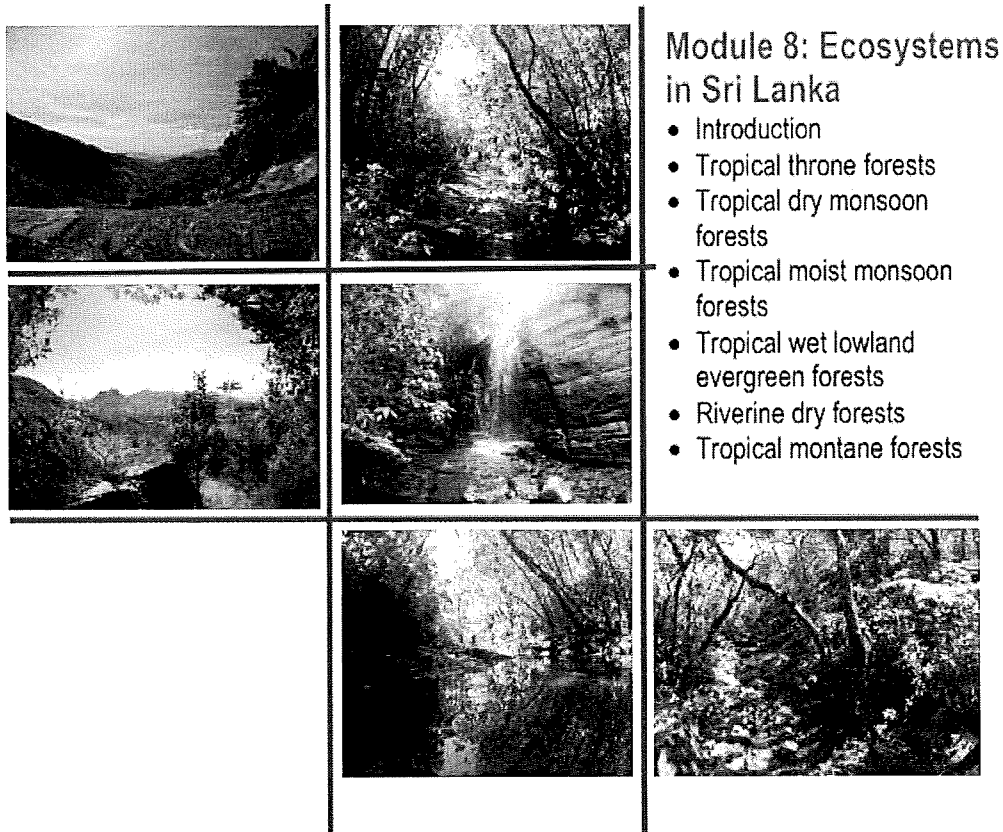


## Module 7: Urban settings & Cities

- Introduction
- Formation of cities
- Monastic sites as densely populated areas
- Water supplies
- Meals supply & refractory
- Healthcare & hygiene
- Waste disposal
- Organic architecture and garden complexes







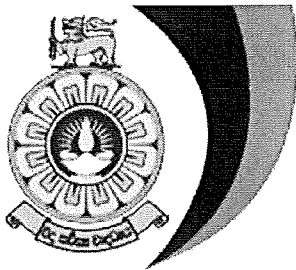
## Module 8: Ecosystems in Sri Lanka

- Introduction
- Tropical throne forests
- Tropical dry monsoon forests
- Tropical moist monsoon forests
- Tropical wet lowland evergreen forests
- Riverine dry forests
- Tropical montane forests

## CESSD

Centre for Environmental Studies & Sustainable Development

The Open University of Sri Lanka



# THE OPEN UNIVERSITY OF SRI LANKA

### Consultancy Services

The CESSD offers consultancy services in the areas of

- Domestic/Industrial wastewater treatment
- Waste and Energy Management

### CONTACTS US

Prof. Bandunee C. L. Athapattu

Director

+94 112 881111

dircessd@ou.ac.lk

CESSD Staff

+94 112881423