



เรียน อธิการบดี

ด้วย Kanazawa University ประเทศญี่ปุ่น ประชาสัมพันธ์โครงการบริการให้คำปรึกษาออนไลน์ “Online Consultation Session for Study at Kanazawa University” สำหรับนิสิตและผู้ที่สนใจศึกษาต่อ ณ Kanazawa University สามารถเข้าร่วมโครงการนี้ได้ เพื่อไขข้อสงสัยหรือข้อกังวลเกี่ยวกับการศึกษาต่อต่างประเทศ ประสบการณ์ที่จะได้รับ จุดเด่นของแต่ละหลักสูตรการศึกษา และการใช้ชีวิตในประเทศญี่ปุ่น เป็นต้น โดยจะมีช่วงให้ปรึกษาโดยนิสิตปัจจุบันที่ศึกษาอยู่ ณ Kanazawa University เป็นเวลา 20 นาที ผ่านทางระบบออนไลน์ด้วยโปรแกรม Zoom แบบไม่เสียค่าใช้จ่าย อีกทั้งได้ประชาสัมพันธ์ข้อมูลบริการอื่น ๆ เช่น Kanazawa University - YouTube, Support for International Students และ KU Campus Life Guide Book มาพร้อมนี้

ทั้งนี้ ผู้สนใจสมัครเข้าร่วมโครงการข้างต้นสามารถศึกษาข้อมูลเพิ่มเติมได้ตั้งเอกสารแนบมาพร้อมนี้ หรือหากมีข้อสงสัยสามารถติดต่อได้ที่ g-planning@adm.kanazawa-u.ac.jp

จึงเรียนมาเพื่อโปรดพิจารณา เห็นควรเวียนแจ้งคณะ/วิทยาลัย เพื่อประชาสัมพันธ์ผ่านระบบ E-doc เว็บไซต์กองพัฒนาภาษา และกิจการต่างประเทศ และเฟสบุ๊ค NU scholarships

ลงชื่อ .....

(นายจักรกฤษณ์ เฟื่องปรังค์)

ผู้อำนวยการกองพัฒนาภาษาและกิจการต่างประเทศ

วันที่ 2 กค 67

จรินทร์  
12 กค 67

จรินทร์  
3 กค 67

(✓) ดำเนินการตามเสนอ

( ) อื่น ๆ .....

ลงชื่อ .....

(ดร.จรัสดาว คงเมือง)

รองอธิการบดีฝ่ายพัฒนานิสิต ศิษย์เก่า และศิลปวัฒนธรรม

ปฏิบัติราชการแทน อธิการบดีมหาวิทยาลัยนเรศวร

วันที่ 3 กค 67

จรัสดาว คงเมือง

# Kanazawa University

# Online Consultation Session

**20-min. free conversation** with our **International Student Advisor**

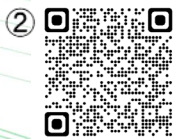
① **Select** a few candidate advisors you wish to talk with

⇒ [https://intl-support.w3.kanazawa-u.ac.jp/pdf/toppage/kanazawa-u\\_ocs-advisors.pdf](https://intl-support.w3.kanazawa-u.ac.jp/pdf/toppage/kanazawa-u_ocs-advisors.pdf)



② **Apply** 7 business days prior to the session from

⇒ <https://ws.formzu.net/fgen/S350281801>



③ **Receive** a Zoom meeting link

④ **Talk** in your native language or English

⑤ **Ask** the advisor about **their experiences, features of the department, life in Japan, etc.**



For **general inquiries such as admission, scholarships, tuition, etc.**, please ask the **One-Stop Consultation Counter!**

⇒ <https://intl-support.w3.kanazawa-u.ac.jp>



# KANAZAWA UNIVERSITY

Campus Life Guide Book

## Get Started! 2023



金沢大学

# Kanazawa University Has Established a *New* School

The College of Transdisciplinary Sciences for Innovation offers a curriculum system across the fields of humanities and sciences, regardless of academic discipline. In April 2023, in order to complete combining the humanities and sciences at Kanazawa University, a new School of Smart Technology and Innovation was established, in addition to the existing School of Entrepreneurial and Innovation Studies and the School of Tourism Sciences and Design. Utilizing advanced integration of virtuality and reality, this school aims to develop human resources who can create future science focused on sustainable smart cities.











## SELECTED FOR WORLD PREMIER INTERNATIONAL RESEARCH CENTER INITIATIVE

In 2017, the Japanese ministry "MEXT" selected Kanazawa University for "World Premier International Research Center Initiative (WPI)." MEXT launched WPI in 2007 in a drive to build "globally visible" research centers with very high research standards and outstanding research environments within Japan, and has selected 17 institutes so far. After being selected for WPI, KU established the new Nano Life Science Institute. The university will receive intensive support from the government for the next 10 years.

## CONTENTS

A Brief Introduction .....	03
Colleges, Schools, and Graduate Schools .....	04
How to become an International Student of KU .....	06
What Makes Kanazawa Special? .....	08
Studying in Kanazawa .....	10
Living in Kanazawa .....	12
Tuition and Accommodation .....	13
Campus Map .....	14

## Kanazawa University Facts & Figures

1	 Area	2,569,232 m <sup>2</sup>
2	 Number of Students	10,331
3	 International Students	794
4	 Enrollment Includes Students from	48 countries/region
5	 International Partner Institutions	320
6	 Number of Books	1.93 million
7	 Number of Employees	2,927
8	 Budget for 2023 Fiscal Year	68,550 million yen
9	 Journal Citation Ranking	18th
10	 University Hospital	38 clinics



As of May 1, 2023

# A Brief Introduction of Kanazawa University

1862

**The third oldest national university in Japan**

Began with a Vaccination Center.



1949

**The birth of the new Kanazawa University**

The original campus was located inside Kanazawa Castle. The University soon gained a reputation around the country as the “university in the castle,” where students could pass through the great castle gate on their way to classes, feeling like samurai warriors.



©Kanazawa University Museum

1995

**Main Campus relocated to Kakuma**



2008

**Faculty system reorganized into 3 colleges and 16 schools**

2012

**A 150th anniversary**

2018

**Faculty system reorganized into 3 colleges and 17 schools**

2021

**Faculty system reorganized into 4 colleges and 18 schools**

2022

**Faculty system reorganized into 4 colleges and 19 schools**

2023

**Faculty system reorganized into 4 colleges and 20 schools**

# Colleges, Schools, and Graduate Schools

## UNDERGRADUATE

Colleges and Schools	
College of Transdisciplinary Sciences for Innovation	School of Entrepreneurial and Innovation Studies
	School of Tourism Sciences and Design
	School of Smart Technology and Innovation
College of Human and Social Sciences	School of Humanities
	School of Law
	School of Economics
	School of Teacher Education
	School of Regional Development Studies
	School of International Studies
College of Science and Engineering	School of Mathematics and Physics
	School of Chemistry
	School of Mechanical Engineering
	School of Frontier Engineering
	School of Electrical, Information and Communication Engineering
	School of Geosciences and Civil Engineering
	School of Biological Science and Technology
College of Medical, Pharmaceutical and Health Sciences	School of Medicine
	School of Pharmacy
	School of Medical and Pharmaceutical Sciences
	School of Health Sciences



## GRADUATE SCHOOLS

Divisions	
Graduate School of Human and Socio-Environmental Studies (Master's Level Section of Integrated Course)	Division of Humanities
	Division of Economics
	Division of Regional Development Studies
	Division of International Studies
Graduate School of Human and Socio-Environmental Studies (Doctoral Level Section of Integrated Course)	Division of Human and Socio-Environmental Studies
Graduate School of Natural Science and Technology (Master's Level Section of Integrated Course)	Division of Mathematical and Physical Sciences
	Division of Material Chemistry
	Division of Mechanical Science and Engineering
	Division of Frontier Engineering
	Division of Electrical, Information and Communication Engineering
	Division of Geosciences and Civil Engineering
	Division of Biological Science and Technology
Graduate School of Natural Science and Technology (Doctoral Level Section of Integrated Course)	Division of Mathematical and Physical Sciences
	Division of Material Chemistry
	Division of Mechanical Science and Engineering
	Division of Electrical Engineering and Computer Science
	Division of Environmental Design
	Division of Natural Systems
Graduate School of Medical Sciences (Master's course)	Division of Medical Science
Graduate School of Medical Sciences (Doctoral course)	Division of Medicine
	Division of Pharmacy
Graduate School of Medical Sciences (Integrated Course of Master's and Doctoral Levels)	Division of Pharmaceutical Sciences
	Division of Health Sciences
Graduate School of Advanced Preventive Medical Sciences (Doctoral Course)	Division of Advanced Preventive Medical Sciences
Graduate School of Frontier Science Initiative	Division of Transdisciplinary Sciences
	Division of Nano Life Science
Graduate School of Law	Division of Law and Politics
	Division of Legal Affairs
Graduate School of Professional Development in Teacher Education	Division of Advanced Professional Development in Teacher Education



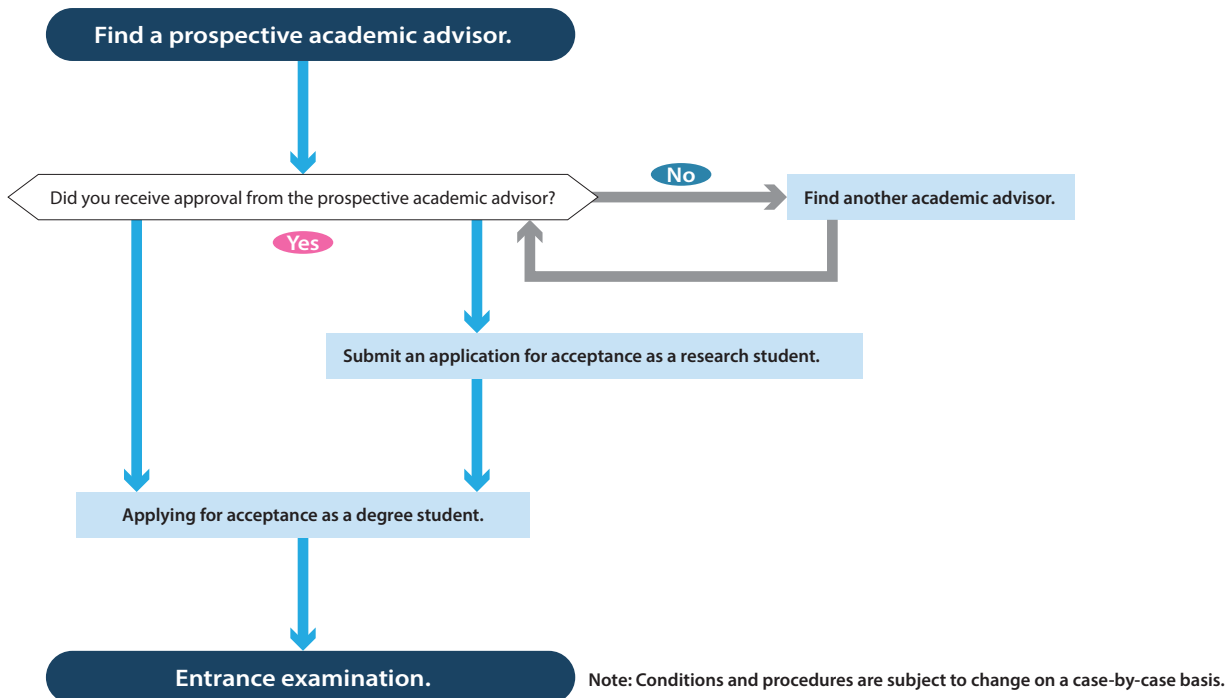
# How to become an International Student of KU

## Application Guidelines for Bachelor Course

<https://intl-support.w3.kanazawa-u.ac.jp/education/admission-area.php>



## General Flow Chart for Graduate Admission ————— Degree and Non-degree (research) Students



<https://intl-support.w3.kanazawa-u.ac.jp/education/admission.php>



## Directory of Researchers

You can find your prospective academic advisor on the following website:

[http://ridb.kanazawa-u.ac.jp/public/index\\_en.php](http://ridb.kanazawa-u.ac.jp/public/index_en.php)



## Scholarships

### Japanese Government (MEXT) Scholarship Students

There are three main types of Japanese-government scholarships available through the Ministry of Education, Culture, Sports, Science and Technology (MEXT) Scholarship program for studying at Kanazawa University.

Types of Japanese Government (MEXT) Scholarship Students	Research students
	Undergraduate students
	Japanese studies students (Kanazawa University Japanese Language and Culture Program)

Recruitment and selection	Embassy Recommendation Scholarship recipients are recruited and initially screened by a Japanese Embassy. Please inquire at the Japanese Embassy or Consulate General in your country for details.
	University recommendation research students and Japanese studies students (Kanazawa University Japanese Language and Culture Program participants who will be studying as exchange students from our partner universities) can be directly recommended by Kanazawa University as selected candidates to MEXT.

### Privately-Financed International Students

We support privately financed students in obtaining scholarships granted by Kanazawa University or other foundations. Approximately 30 foundations offer scholarships to international students.

<https://intl-support.w3.kanazawa-u.ac.jp/tuition/private.php>



### Foreign-government Sponsored Students

When a request for acceptance of a foreign-government sponsored student comes through the Ministry of Education, Culture, Sports, Science Technology of Japan (MEXT), a foreign government or an embassy of a foreign country, we make a decision, taking into account the applicant's major field.

Presently, Kanazawa University receives students dispatched from the governments of Malaysia, Indonesia, Vietnam, Thailand, Myanmar, and other countries. Application and acceptance procedures for international students dispatched from foreign governments, in which the Japanese government is not involved, are the same as for privately financed international students.

Useful Information>>STUDY IN JAPAN



## Exchange Students

Exchange programs are designed for **students from the institutions that have an exchange agreement with Kanazawa University** to study at Kanazawa University for one semester or up to one year. While continuously enrolled in their home institutions, they study in a non-degree program (at Kanazawa University) for the purpose of taking credited classes or participating in independent research under the guidance of a supervisor. For details, please check the website:

<https://kuglobal.w3.kanazawa-u.ac.jp/eg/>



Name of Program	Kanazawa University Exchange Program		Kanazawa University Japanese Language and Culture Program
Contents	<ul style="list-style-type: none"> <li>- Belong to College of Human and Social Sciences (undergraduate), Graduate School of Human and Socio-Environmental Studies or Graduate School of Law</li> <li>- Attend regular curriculum classes of Kanazawa University and/or study in their major field(s) at the graduate school</li> <li>- Can take courses on the Japanese language and on Japanese culture and society and earn credits with these courses</li> </ul>	<ul style="list-style-type: none"> <li>- Belong to College of Science and Engineering, College of Medical, Pharmaceutical and Health Sciences, College of Transdisciplinary Sciences for Innovation (undergraduate), Graduate School of Natural Science &amp; Technology, or Graduate School of Medical Sciences, Graduate School of Advanced Preventive Medical Sciences, Graduate School of Frontier Science Initiative</li> <li>- Conduct research based on their individual purpose for studying while taking classes on subjects related to their major, given in Japanese or English</li> <li>- Can take courses on the Japanese language and on Japanese culture and society</li> </ul>	<ul style="list-style-type: none"> <li>- Belong to Organization of Global Affairs</li> <li>- Attend upper-intermediate to advanced Japanese language courses, and cultural courses that examine not only present-day Japanese society and culture, but also the rich traditional culture of Kanazawa</li> <li>- Conduct a joint research project on multiple languages and cultures with Japanese students</li> <li>- Complete a research project on subjects related to Japan</li> <li>- Can be selected as a Japanese Government (MEXT) Scholarship recipient</li> </ul>
Language of Instruction	English and/or Japanese		Japanese
Period	One year or one semester beginning in April or October		One year beginning in October

# What Makes Kanazawa Special?



Kanazawa balances the unique character of its cultural history with the conveniences of a modern city.

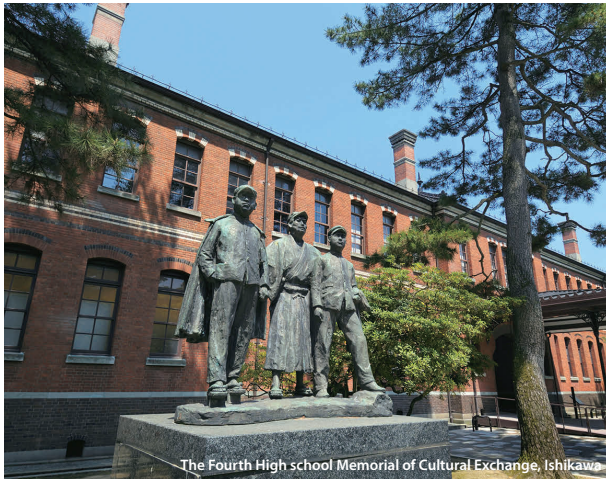
## A city of tradition and beauty

Kanazawa began to take shape during the Edo Period (1603-1867) at the hands of the Maeda clan, who ruled the region. In its prime, the city was Japan's 4th largest city after Edo, Osaka, and Kyoto, boasting a population of 1,000,000. The heritage and scenic beauty from this prosperous time have remained in the city, where they continue to attract people from all over the world.

A rich culture has permeated the lives of citizens, while the policies of the Maeda clan continue to raise people's interest in arts and crafts. A multitude of traditional industries are kept alive by the younger generation.



Higashi-chaya District



The Fourth High School Memorial of Cultural Exchange, Ishikawa

## A city of colleges and students

There are 21 institutions of higher education in Ishikawa Prefecture, the 2nd highest number per capita after Kyoto, and the 4th highest number of university students. This rich academic tradition goes back to the Meiji Period, when the government began opening schools to educate the future elite of the country. Kanazawa University began as the first such institution established on the Sea of Japan, and attracted the brightest and best students in the literary arts.

## A city of comfort and convenience

Ishikawa Prefecture has a population of 1,125,000, and 450,000 people call Kanazawa their home. As the capital city located in the center of the prefecture, Kanazawa is the heart of politics, culture, and economics for the Hokuriku Region.

JR Kanazawa Station, the gateway to Kanazawa City, was selected as one of the only beautiful stations in the world by the web version of the 2011 American travel magazine "Travel + Leisure" (World's Most Beautiful Train Stations). With the opening of the Hokuriku Shinkansen and improved access from the Tokyo metropolitan area, it is a spot that is attracting more and more attention from home and abroad.



Tsuzumi-mon



Kanazawa Castle Park

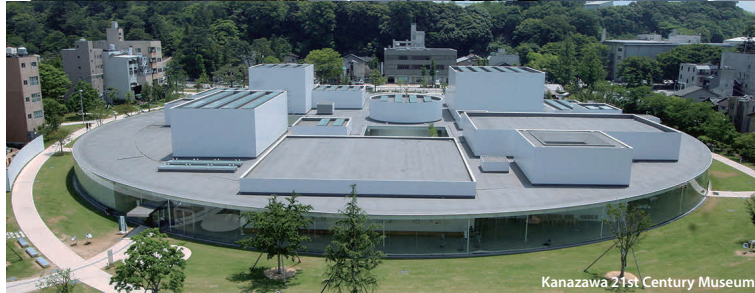


Snow Covered Kenrokuen

## A city rich in tourism and arts

In January 2009, several government ministries certified Kanazawa and four other cities as Level One Historic Cities. In June of the same year, Kanazawa became the 17th member of the UNESCO Creative Cities Network, and the third in Japan after Nagoya and Kobe, for its renaissance in the arts and music.

The city's professional orchestra, Orchestra Ensemble Kanazawa, has earned high praise for its performances overseas.



Kanazawa 21st Century Museum



Photo credit : Kanazawa City

National Crafts Museum

## A city of abundant nature and traditional architecture

Another factor that led to the flourishing of traditional culture in Kanazawa is the region's distinctive scenery in each of the four seasons. Seasonal changes keep life interesting — in spring, cherry blossoms color the city pink; in summer sweetfish dance in clear streams; in fall crimson foliage resembles swaths of brocade; in winter the world turns white. In addition to two large, gently flowing rivers, Saigawa River and Asanogawa River, a network of water canals runs through the city, making a pleasant babbling sound. Because Kanazawa was not devastated by the war, it still has historical and cultural buildings that are over 400 years old. When strolling around town, you will find old temples, shrines, and merchant houses with lattice doors. With many famous sightseeing spots such as Kenrokuen Garden — one of the three most beautiful gardens in Japan, Kanazawa Castle and samurai houses, Kanazawa is one of Japan's most attractive tourist destinations.



Kanazawa Lacquerware

Kutani Pottery

# Studying in Kanazawa

## Integrated Japanese Language Program

### What is the Integrated Japanese Language Program?

We offer Japanese classes to our undergraduate and graduate students.

In general, all international students enrolled at Kanazawa University are eligible for this program, which is held in each quarter of the year. It offers a wide range of classes that cater to all levels of Japanese language ability, from beginner to advanced.

The aim of this program is to improve students' Japanese language ability so that they can make the most of their university studies and adjust to life in Japan. The ultimate goal, of course, is to give them enough language ability to be able to understand lectures in Japanese.

### Eligible Students

All international students enrolled at Kanazawa University (undergraduates, graduates, research students, auditors, etc.) whose native language is not Japanese are eligible.

### Curriculum

This program consists of comprehensive classes, kanji classes and skill-specific classes. Students can select the appropriate level to fit their needs in each area.

- Comprehensive classes: Seven different levels, from beginner's (never studied Japanese before) to advanced levels. Learn Japanese comprehensively in a class that matches your own level.
- Kanji classes: Divided into difficulty levels, students learn how to read and write kanji, and how to use kanji vocabulary.
- Skill-specific classes: A range of classes for the four different skills of "speaking," "listening," "writing" and "reading." Students can choose the classes that best suits their learning goals and levels.

## Advising System

When students encounter problems in their studies, classes, private life, or any other areas, they should feel free to consult their academic advisor, tutor, international student advisor, counselor, students affairs section or related divisions.

Tutors are domestic students who assist international students with their studies, living arrangements, and inter personal relationships, so that they can focus on their studies and social life. Tutors might offer Japanese language support, help with submitting documents, or provide advice about life in Japan. They are an invaluable resource for international students getting used to their new life. Generally, they meet students once or twice a week. Tutors will be your first friends in Japan!

Kanazawa University supports international students in finding employment in Japan through the "Hokuriku-Shinshu Employment Promotion Program for International Students." We offer business-Japanese language training, career education, internship opportunities, and career counselling to our international students.





## Studies on Japanese Culture and Society

### Outlines

The Organization of Global Affairs offers an opportunity to learn, through hands-on experiences, about the culture and society of Japan in the "Program for Studies on Japanese Culture and Society".

This program consists of subjects such as Budo (martial arts), Japanese Art Performance and Music, and Pottery. It is open to both international and Japanese students, so that both can interact with each other through coming into contact with the traditional culture and society of Japan, and deepen their understanding in terms of both knowledge and experience.

### Eligible students

- 1) International students who belong to the Organization of Global Affairs
- 2) All other students, international or domestic, from other departments and faculties

## Extracurricular Activities

### Outline

Extracurricular cultural activities such as Tea Ceremony and Flower Arrangement are prepared specially for international students who wish to gain a deeper understanding of traditional Japanese culture. An exhibition of their works is held every year.

### Eligible students

Mainly international students at Kanazawa University



# Living in Kanazawa

## FOOD

**We have everything, from well-stocked supermarkets to ethnic dining.**

Preparing your own meals with the clever use of supermarket ingredients is the basis of a healthy and economical diet. But who wants to eat at home every night? Around campus you'll find no shortage of restaurants that fill you up without emptying your wallet. Make each meal an adventure!



Italian Restaurant

Yakitori Restaurant

Indian Restaurant

Sashimi



Kanazawa Curry

Hanton Rice

## Living Expenses

Example of monthly breakdown

• Rent	30,000 yen ~ 50,000 yen
• Utility (Electric/Water/Gas)	around 15,000 yen (depends on the season)
• Food	25,000 yen ~ 30,000 yen
• Other expense	30,000 yen ~ 40,000 yen

## SHOPPING

**Food stores, clothing stores, electronics stores and pharmacies have your needs covered.**

Foods stores, clothing stores, electronics stores, pharmacies, and hardware stores close to campus have everything you need at affordable prices.



Electronics Store

Home Furnishing Store

Daily Necessities



## DOWNTOWN

**City life at your doorstep: easy access from campus to downtown delights!**

Let's go to Kanazawa's famous downtown area.



Kata-machi

Omi-Cho Market

Photo credit: Kanazawa City

Kohrinbo

Cross Gate Kanazawa

## TRANSPORTATION

**A student's best friend!**

Kanazawa University has excellent access by public bus, and there are four bus stops on campus.

This makes access to campus very simple.



## HOSPITAL

**Peace of mind in an emergency!**



Kanazawa University Hospital

## National Health Insurance

All foreign nationals who stay in Japan longer than three months are required to join the National Health Insurance system. This insurance covers about 70% of medical charges, including hospitalization.

# Tuition and Accommodation

## Tuition and other fees

### Degree Students

Classification	Undergraduate	Graduate	Law school
Examination	17,000 yen	30,000 yen	30,000 yen
Admission	282,000 yen	282,000 yen	282,000 yen
Tuition (Annual)	535,800 yen	535,800 yen	804,000 yen

\*Tuition Exemption

Students enrolled in a graduate program who have financial hardship and an exemplary academic record are eligible for tuition exemption (complete or partial).

### Non-degree Students

Classification	Credit auditors	Research students
Examination	9,800 yen	9,800 yen
Admission	28,200 yen	84,600 yen
Tuition	14,800 yen/unit	29,700 yen/month

## Accommodation

### List of Accommodations at Kanazawa University

The period of residence is different for each dormitory. (Generally, 6 months to 1 year)

	Name	Location	Housing type	Eligibility for move-in	*Fees/month
1	Kanazawa University Student Dormitory "Sakigake"	Kakuma	<ul style="list-style-type: none"> <li>Shared house (Single-gender housing)</li> <li>8 students share 1 unit (8 single rooms, a shared kitchen, 2 showers and 2 toilets);</li> <li>Shared with students of various nationalities including Japanese.</li> </ul>	<ul style="list-style-type: none"> <li>New international students</li> </ul>	Around 35,000yen - 40,000yen
2	Kanazawa University Student Dormitory "Hokumei"	Kakuma	<ul style="list-style-type: none"> <li>Shared house (Single-gender housing)</li> <li>5 students share 1 unit (5 single rooms, a shared kitchen, 1 shower and 2 toilets);</li> <li>Shared with students of various nationalities including Japanese.</li> </ul>	<ul style="list-style-type: none"> <li>New international students</li> </ul>	Around 35,000yen - 40,000yen
3	Kanazawa University International House	Kakuma	<ul style="list-style-type: none"> <li>Single room (with small kitchen, shower and toilet)</li> </ul>	<ul style="list-style-type: none"> <li>New international students</li> <li>New international researchers (negotiable)</li> </ul>	Around 35,000yen

\*Fees include room charge, utility fee and internet fee.



KU Student Dormitory "Sakigake"



KU Student Dormitory "Sakigake" LDK



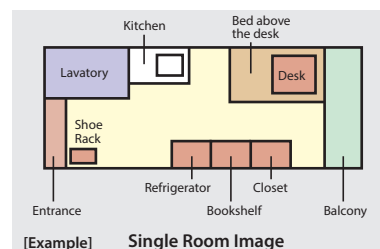
KU International House



KU Student Dormitory "Hokumei"

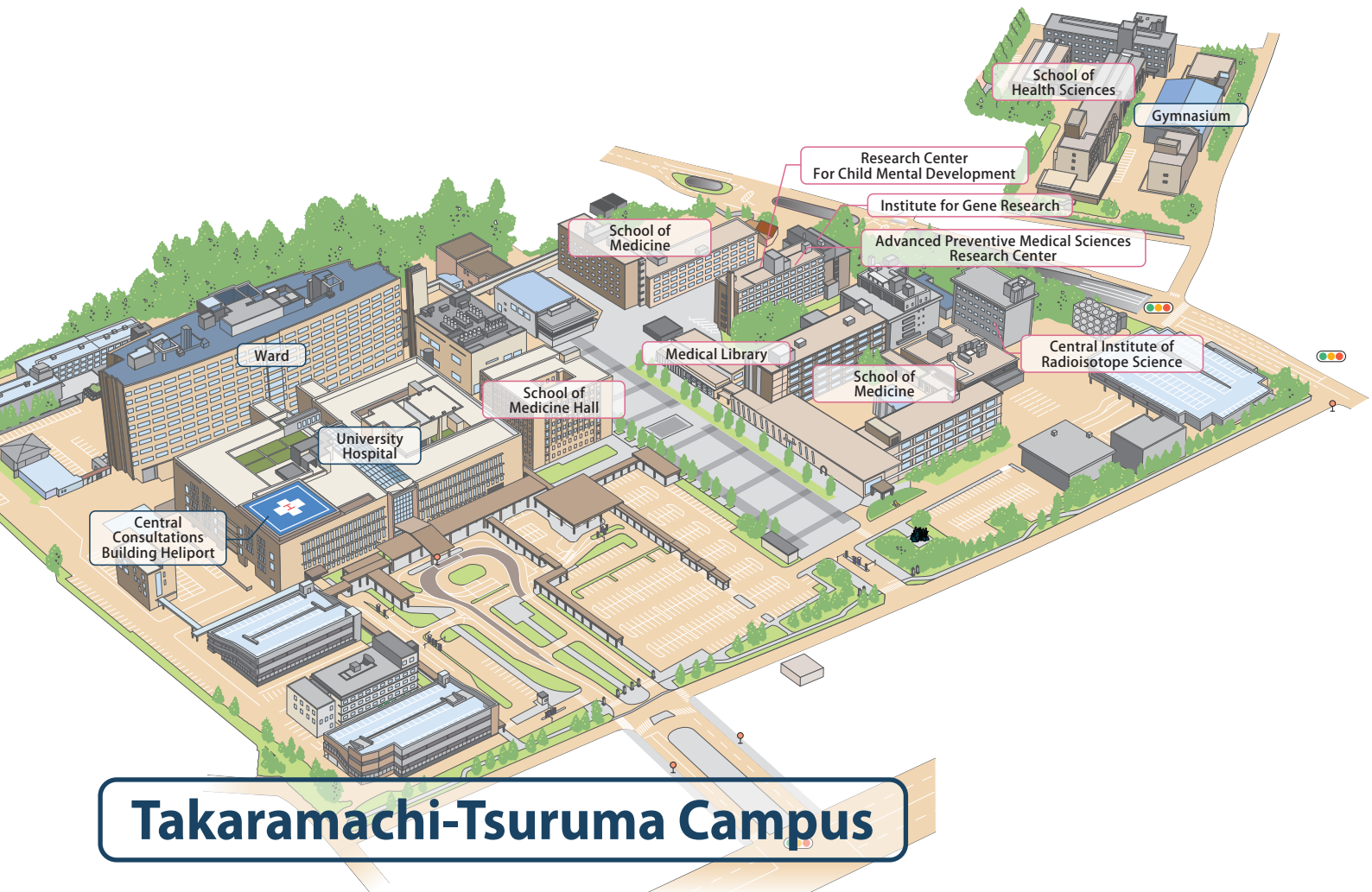
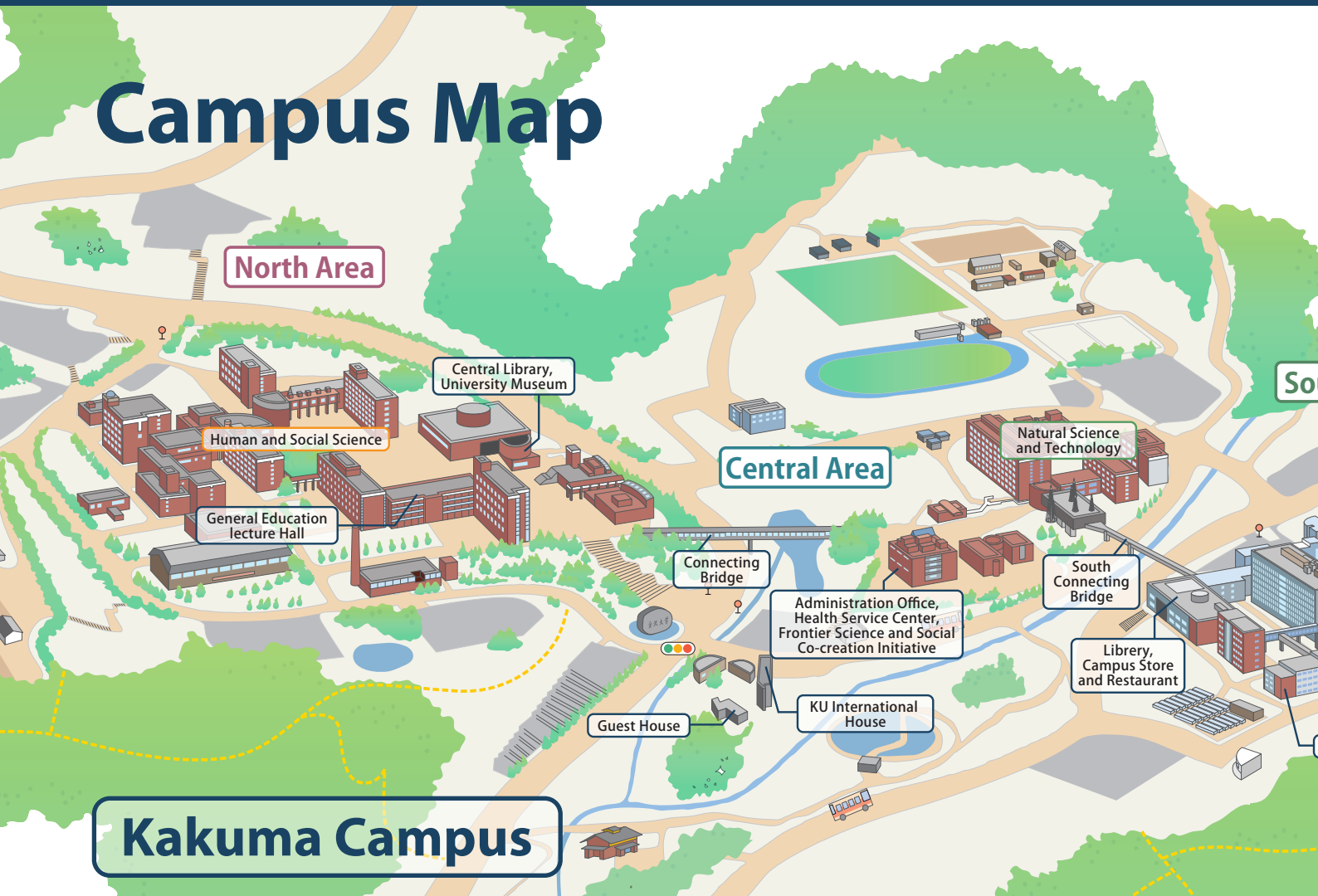
### Private Housing

Rents in Kanazawa vary according to the type of housing (by size, location etc.). The approximate total living expenses are around 80,000 yen - 100,000 yen per month. Please plan how to cover your living expenses before coming to Kanazawa.

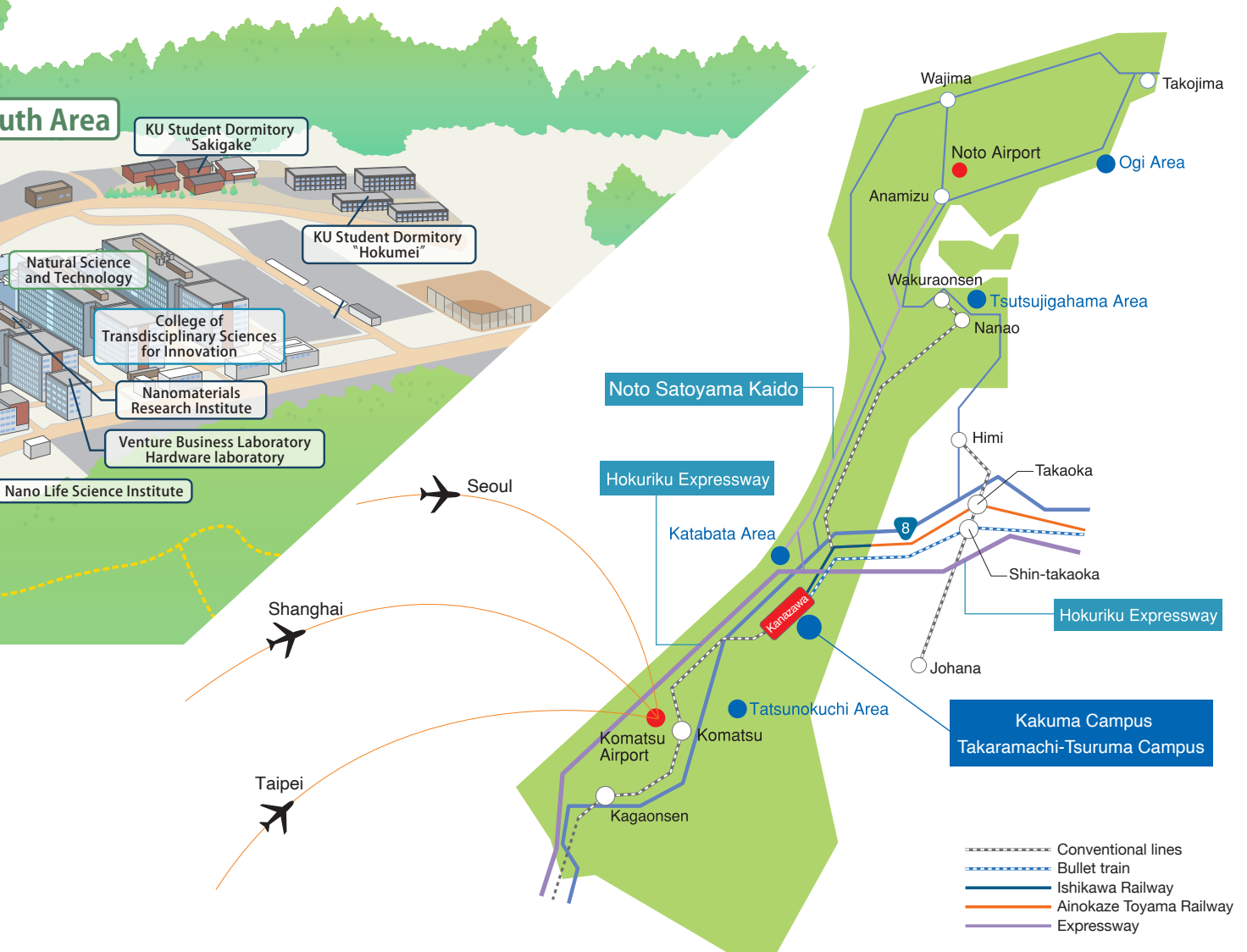




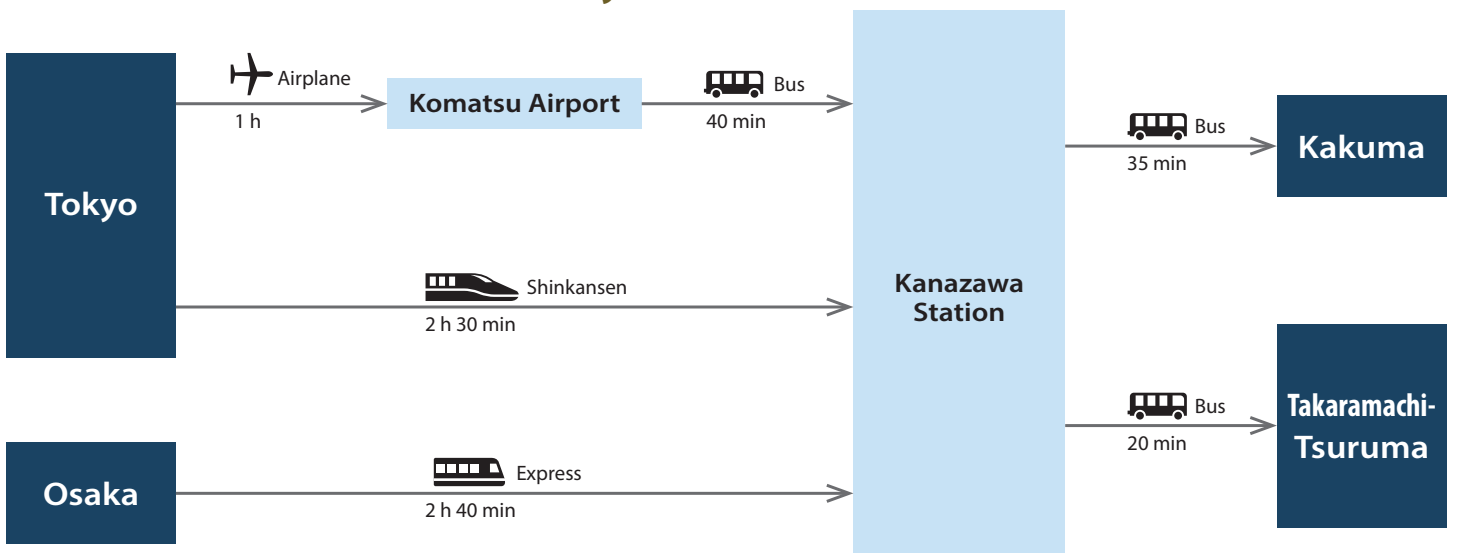
# Campus Map

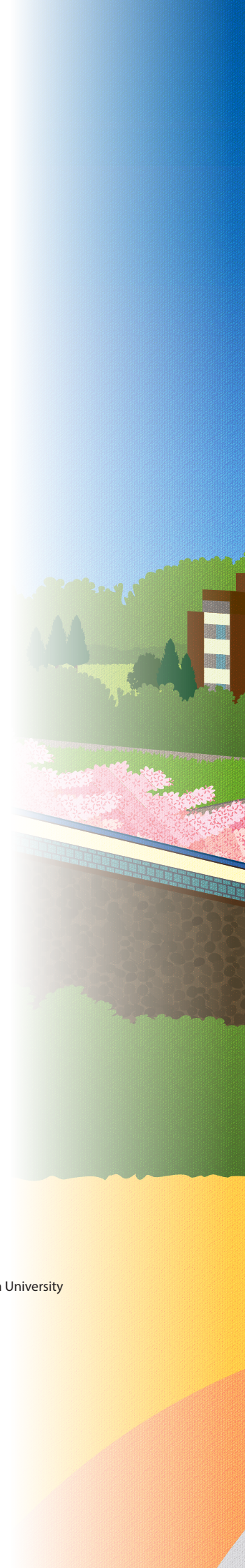


# Ishikawa in Japan



## Access to Kanazawa University





Published by International Relations Department, Kanazawa University  
Kakuma-machi, Kanazawa, Ishikawa 920-1192 Japan  
(International Student Section)  
E-mail : ryukou@adm.kanazawa-u.ac.jp  
(Global Affairs Section)  
E-mail : kokukou@adm.kanazawa-u.ac.jp  
<https://www.kanazawa-u.ac.jp/e/>

<https://sgu.adm.kanazawa-u.ac.jp/>

Issue Date : August, 2023